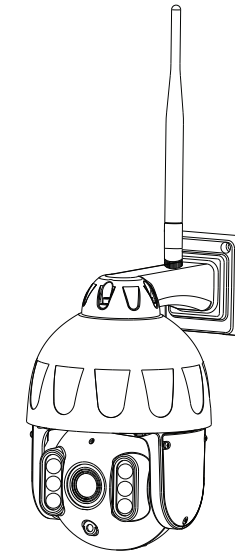


Quick Setup Guide

Wireless IP Camera



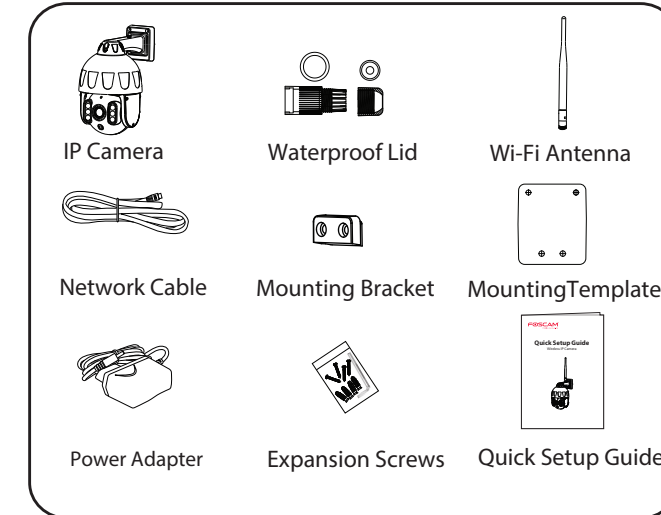
To view this guide in other languages (e.g. Nederlands, Deutsch, Français, Español), and for detailed manuals, tools, etc., please visit foscam.com/downloads.

V1.1
305503001016

Setting Up Your Foscam Security Camera

1 Getting Started

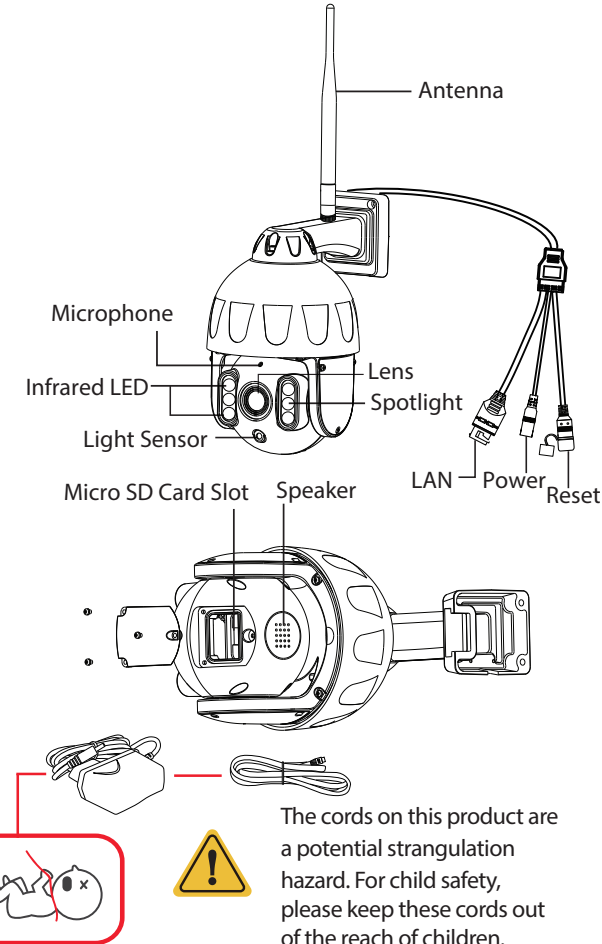
Package Contents



Security Tips

- Please change the camera's password regularly, using a combination of numbers, letters and special characters.
- We recommend that you regularly update your camera with the latest available software and firmware to ensure the best experience with your camera.

2 Physical Description



3 Setting Up Your Camera: Connection via the Foscam App (Recommended)

Before You Get Started

Scan the QR code below to download and install the Foscam APP.



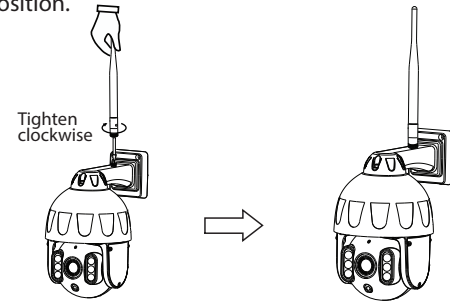
To ensure a smoother video experience on your smart phone, it is recommended that your smart phone meet the following specifications:

- iOS: version 11 or higher.
- Android: 5.0 or higher, using a device with a Graphics Processing Unit (GPU).

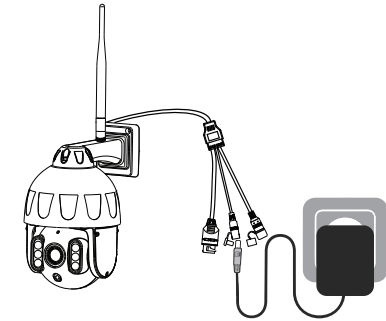
Note: For the best experience, please update the APP to the latest version!

WiFi Connection

1. Please tighten the antenna clockwise and make sure it is in a vertical position.

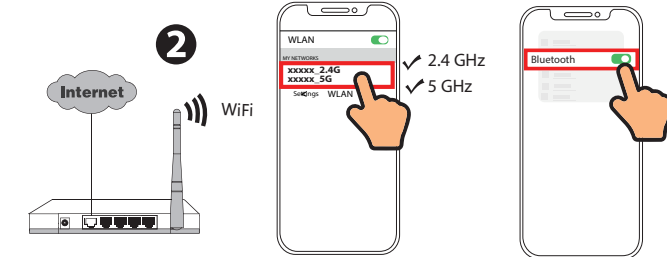


2. Plug the power adapter into the camera, and please wait for a few seconds until hearing the "Ready for WiFi configuration"



Tips: If you didn't hear the voice prompt, press and hold reset for about 3~5 seconds to reset the camera.

3. Make sure that your smartphone is connected to your WiFi router and turn on the system Bluetooth.

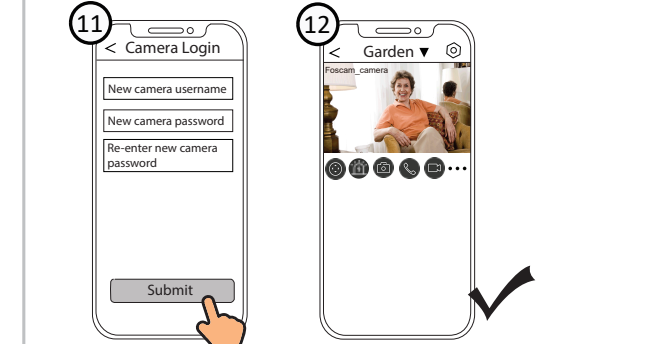
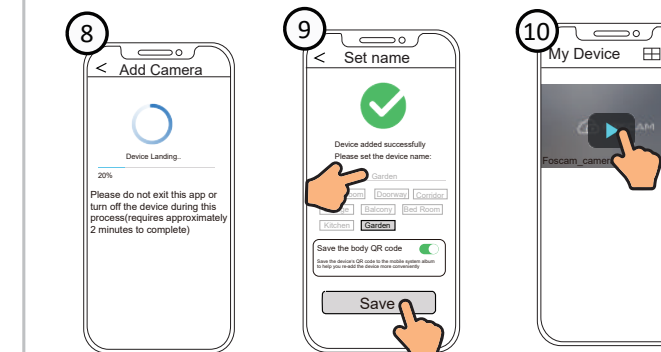
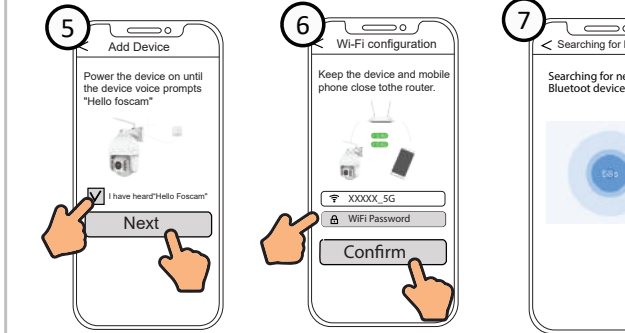
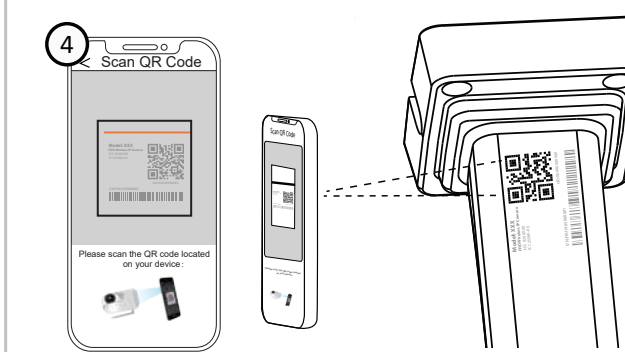
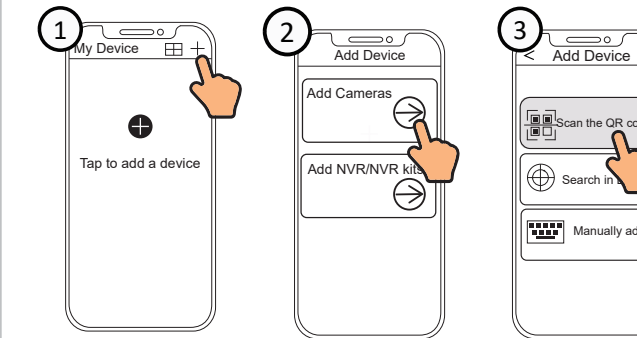


Note: Before connecting the camera via Bluetooth, ensure that the system's Bluetooth is turned on.

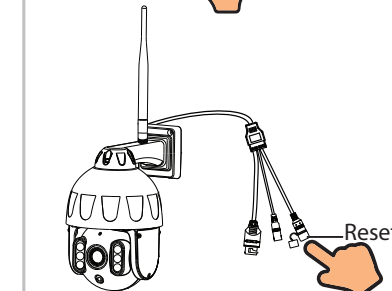
4. Open the foscam APP and please register a Foscam account, or sign in if you have one already.



5. Follow the steps below:



Note: If the adding process fails, please reset your camera and try adding again according to the above method.



4 PC Access Your Camera

■ Foscam VMS

Foscam VMS is a new tool for PCs. It does not require plug-ins and is compatible with Windows & Mac, supporting all Foscam HD cameras and up to 36 cameras at the same time. If you would like to manage multiple cameras, we suggest you install Foscam VMS. You can download the "Foscam VMS" Windows version from foscam.com/vms, and can download the "Foscam VMS" Mac version from the APP store:

<https://apps.apple.com/cn/app/foscamvms/id1521202507?mt=12>

Note: For the best experience, please update Foscam VMS to the latest version!

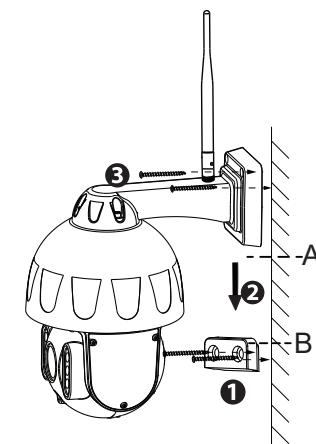
Add the IP Camera

1. Run Foscam VMS, then create a local administrator account and login.
2. Tap the "+" icon on the Foscam VMS and follow the setup wizard to add your camera.

Please visit foscam.com/downloads to view the user manual and for additional detailed steps.



5 Hardware Installation

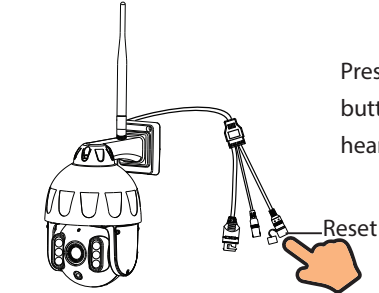


1. Screw the mount on the wall with the two screws provided.
2. To attach the camera base A to the mounting bracket B, insert the base into the bracket as pictured.
3. Screw the camera to the wall with the two screws provided.

6 Important Notice

■ Camera Username & Password

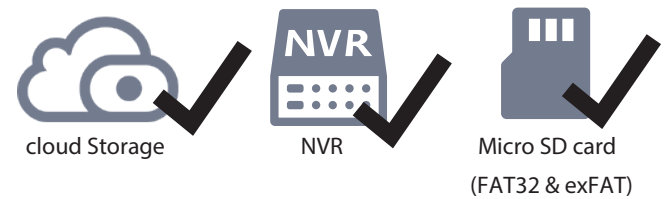
The camera username & password are used to access and manage your camera. Having a strong password can significantly improve the security of your camera. If you have forgotten either of them, please press the "Reset" button.



Press and hold the "Reset" button for 3-5 seconds until hearing "reset succeed".

■ Storage Media

Your camera supports cloud, NVR (Network Video Recorder), and Micro SD card (supports FAT32 and exFAT format) storage formats.



How to format Micro SD card, please follow the steps below:

1. Insert the Micro SD card into the computer.
2. Connect the computer to the internet.
3. Open the browser and go to the Foscam website.

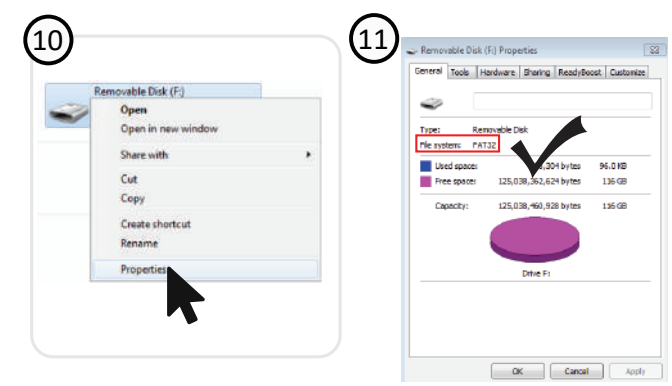
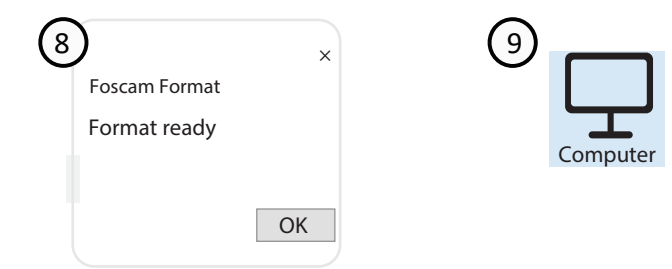
4. Scan the QR code below to download the "FoscamFormat" Tool.
5. Open the "FoscamFormat" Tool.



foscam.com/downloads/app_software.html



6. In the FoscamFormat tool, choose the SD card (F:\), accept the terms of use, and click "Format".
7. A warning message will appear: "ALL data on disk: I: will be erased, are you sure?". Click "Confirm".



■ Safety Tips

- Prohibit use at high temperature
- Prohibit use at low temperature
- Keep away from fire
- Keep away from children
- Not a children's toy
- Use the supplied screw pack
- Keep dry
- Caution Electricity
- Use the correct power supply

7 Product Performance

WLAN frequency range: 2412MHz - 2472MHz and 5725MHz - 5850MHz
 Bluetooth Frequency Range: 2400-2483.5MHz
 Maximum transmission power: < 18dBm
 Wireless Standard: IEEE802.11b/g/n (2.4GHz) IEEE802.11a/n/ac (5GHz)
 Power Supply: DC 12V 2.0A 24W

8 Troubleshooting

● IP cameras is not powering on

- If you find your camera is not powering on, please the following:
1. Please check whether the outlet is working properly or not. Try to plug the camera into a different outlet and see whether it will work.
 2. Please check whether the DC adapter is working or not. If you have another 12V/2A power adapter which is working, please try with another power adapter and see whether it will work.
 3. If it still won't work, please contact Foscam support.

● How to re-configure the WiFi connection for Foscam cameras after router changed?

1. Please connect the camera to your router with an ethernet cable. If you can see the camera live video on the Foscam app, please go to camera settings-->WiFi settings to choose the new WiFi name and input WiFi password to set up. After the WiFi settings is completed, please disconnect the ethernet cable from the camera and wait for some seconds to connect to the camera.
2. There is a need to reset the camera first. Please refer to <https://www.foscam.com/faqs/view.html?id=13> to see the reset steps. Then please open the Foscam app to scan the QR-code of your camera to set up the wireless connection for the camera. Please make sure your cellphone is connected to that new WiFi.



support@foscam.com



CE Certificate statement Website:
<https://www.foscam.com/company/ce-certificate.html>

Exporter and Importer Information Opened to Public:
<https://www.foscam.com/company/open-information.html>



FAQS



Foscam APP



Facebook

Manufacturer: Shenzhen Foscam Intelligent Technology Co., Ltd
 Addr: Room 902, Building 1B, Shenzhen International Innovation Valley, Xingke 1st Street, Nanshan District, Shenzhen, Guangdong, China, 518055

www.foscam.com

Due to product upgrades and other reasons, this guide may be slow to update, resulting in slight inconsistencies with the official website information. Please take the official website (www.foscam.com) information as the current standard.